

# Address Confidentiality Program



Jason Kander • Secretary Of State

PARTICIPANT NEWSLETTER

VOL. 10, NOVEMBER 2014

## ***Safe at Home* is Unable To Forward Packages**

### **What is the *Safe at Home* package policy?**

*Safe at Home* cannot forward gift packages.

### **How can I receive packages?**

- Have your packages shipped to a friend or relative.
- Have packages shipped to your place of employment.
- Rent your own mailbox from the U.S. Postal Service or a commercial mailbox store for package deliveries.
- Suggest gift cards as presents.

### **How can I shop online?**

- Ship packages under an alias name to your actual address.
- Send online retail purchases to a store for pick-up (site-to-store option).



### ***Just a Reminder***

The *Safe at Home* office will be closed and participant mail will not be forwarded on the following state holidays:

- Veteran's Day  
(November 11)
- Thanksgiving Day  
(November 27)
- Christmas Day  
(December 25)
- New Year's Day  
(January 1)

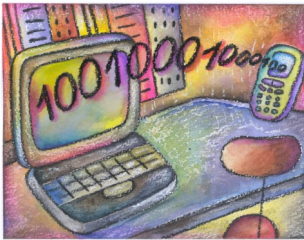
### **How can I use my substitute address this holiday season?**

- If you send **packages** to friends or family members, please use your actual address (with an alias name or initials) or an alternate mailing address (relative/friend/work/rented mailbox) for your return address. Do not use your *Safe at Home* P.O. box as a return address on a package you mail. If a package you mailed is returned to the *Safe at Home* address, it cannot be returned to you.
- If you send **cards or letters** to friends or family members, please include your name and authorization number in the return address. If cards are returned to you at the substitute address, we will forward them to you. If you do not use your name or authorization number in your return address, we will not know the mail should be returned to you.

## Starting a New Business

Starting a business is an opportunity to make key decisions that affect your life and can benefit your family in a positive way. However, navigating the startup process while protecting your confidential address can be a daunting task. When starting a business in Missouri, you must register with several agencies on the federal, state and local level to operate legally. *Safe at Home* participants are allowed to use their substitute address in place of their business and home address on forms that do not typically allow a P.O. box address. Registering a business through the secretary of state's office requires a specific procedure to ensure your address stays safe. In response to the questions we receive from participants about this process, we have collected a few resources and tips for you. To reference the guide, please visit: [www.sos.mo.gov/business/safeathome/docs/SAHbusinesstipsheet.pdf](http://www.sos.mo.gov/business/safeathome/docs/SAHbusinesstipsheet.pdf).

## Cyberstalking



It's always challenging to keep up with new technology, but as a victim of stalking, it is essential to keep abreast of new ways stalkers can use technology to track and control their intended victims. Smartphones can be tools to help protect you, but they can also compromise your safety and autonomy.

### Spyware for smartphones

Stalkers need physical access to your phone long enough to download and install spyware. Once completed, the stalker can use the spyware to:

- Remotely monitor your movements
- Use your phone's GPS to track your location
- Listen to your calls and read your texts
- Record websites visited and capture passwords
- View the pictures taken with your phone
- Activate call blocker so people can't contact you
- Activate the phone's camera to view and record your surroundings

### Has my phone been compromised?

Once loaded on your phone, spyware is difficult to detect. Hints that your phone may have been compromised:

- Phone turns on and off
- Unusual battery drain or spikes in data usage
- The perpetrator knows things that could only be known through access to the phone

### The next step

If you suspect your phone has been compromised, contact local law enforcement or local domestic and/or sexual violence program. For more information, please visit [www.victimsofcrime.org/our-programs/stalking-resource-center](http://www.victimsofcrime.org/our-programs/stalking-resource-center).

## Buying a Vehicle?

If you have recently purchased a vehicle and need to register it with the Department of Revenue, the first step is to contact the *Safe at Home* program. We will confirm that we have your current address and determine which license office you need to visit to apply for your title. We will then contact the license office to provide instructions for handling your record and calculating your sales tax. We can determine your appropriate sales tax rate without giving them your confidential address. Once this information is given to the license office, we will contact you and let you know they are ready for you to come in.

### *Safe at Home*

[www.MoSafeAtHome.com](http://www.MoSafeAtHome.com)

P.O. Box 1409  
Jefferson City, MO 65102

Phone: (866) 509-1409  
Fax: (573) 522-1525

Email: [SafeAtHome@sos.mo.gov](mailto:SafeAtHome@sos.mo.gov)